

Healthcare Science in Kent and Medway ICB/ICS

Mark Knight

Chief Healthcare Scientist, NHS Kent and Medway ICB

markknight@nhs.net

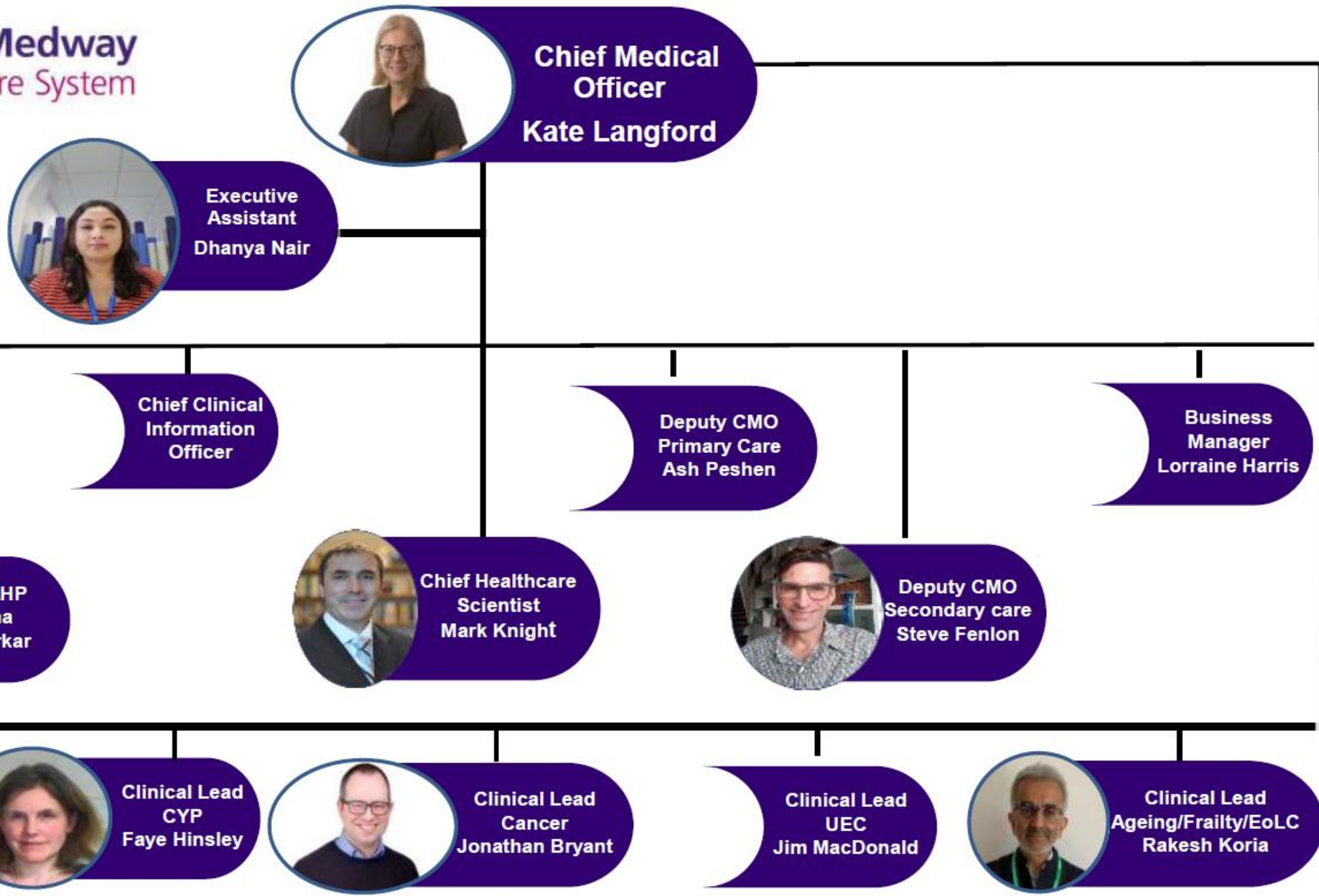
Introduction



- NHS Kent and Medway was early in appointing a Healthcare Science Strategic Lead, who started in September 2021
- The other 6 Integrated Care Systems (ICSs) across SE England all now have HCS Leads
- The Chief Healthcare Scientist is in the Chief Medical Officer's Team at NHS Kent and Medway ICB, starting in April 2023
- This post will work closely with individuals, organisations and Networks across the Kent and Medway ICS:
 - Promoting Healthcare Science
 - Funding and resources
 - Building new education, training and workforce development programmes
 - Ensuring that Healthcare Science is represented on new medical and scientific programmes across the ICS
 - **Helping and supporting you!**



**NHS Kent & Medway -
Chief Medical Officer
Organisation Chart**



Chief Medical Officer's Team



- Multi-professional leadership
- Represented on groups across the ICS, including:
 - Pathology Network
 - Imaging Network
 - Cancer Alliance Delivery Board
 - Radiotherapy Network Oversight Board
 - South East Clinical Senate
 - South East regional Healthcare Science Leadership group
- Weekly meetings of CMO Team
- Feedback, Collaborate, Support, Create!



CCPL Event, 20th April 2023



Why we are here

- Our Clinical & Care Professional Leadership (CCPL) challenge is huge!
- We want to include all aspects of the clinical and care professional voice.
- The opportunities for our people & communities is greater when we get this right.
- The people of Kent and Medway deserve the very best care and experience... our friends, families and colleagues do too!
- We are here to lead and support colleagues in our organisations across Kent and Medway to address this challenge and

Make Kent & Medway a great place to receive care & work, with reduced health inequalities and improved health outcomes!



Example 1: Respiratory Testing in Primary Care



- A £1000 Medical Device for assessing respiratory function purchased in each of the 41 Primary Care Networks in Kent and Medway could enhance care of
 - Paediatrics
 - Adults with COPD
- **This came from a discussion in the CMO's team**
- From an HCS perspective:
 - Is there a case for a small Managed Equipment Service?
 - How would Clinical Engineering colleagues across the ICS key into this?
 - How would Physiological Science colleagues be involved in service delivery?
 - Who would provide teaching and training on the devices?
- How does this fit with regional / national priorities?
- Where would the funding come from?

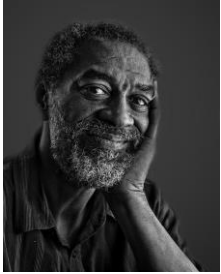
Example 2: Imaging in Dementia

- There are 3 elements to dementia diagnosis: Clinical assessment, ACE and Imaging
- The imaging pathway could be improved and better integrated
- Is it possible to create 'One-stop-shop' facilities for dementia diagnosis?
- Could these operate out of Community Diagnostic Centres (CDCs)?
- **This came from a discussion in the CMO's team**
- From an HCS perspective:
 - Can we link in with Imaging Departments / CDCs / AHP colleagues to create an 'One-stop-shop' dementia service, including imaging?
 - How would Medical Physics departments across the ICS be involved?
 - Looking at the wider CDC programme, is Pathology, Physiological Science, Bioinformatics and Medical Physics and Clinical Engineering adequately represented?
- How does this fit with regional / national priorities?
- Where would the funding come from?

...join the dots, make new links, coordinate and harmonise



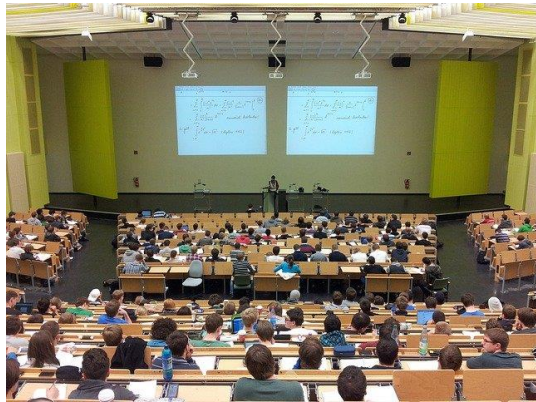
Universities



Kofi



Claire



University Students



Research Hub

Industry partners



Andy

Leaders from the 4 HCS Paula Jing



Sarah

Sumeet



Faculty of Healthcare Science



NHS Healthcare Science Workforce



Arjun



Tom



Fen

Other professional groups (AHP, ACP/IP etc)



Petra

Education Leads

Schools and Colleges



Farhan



Hamza



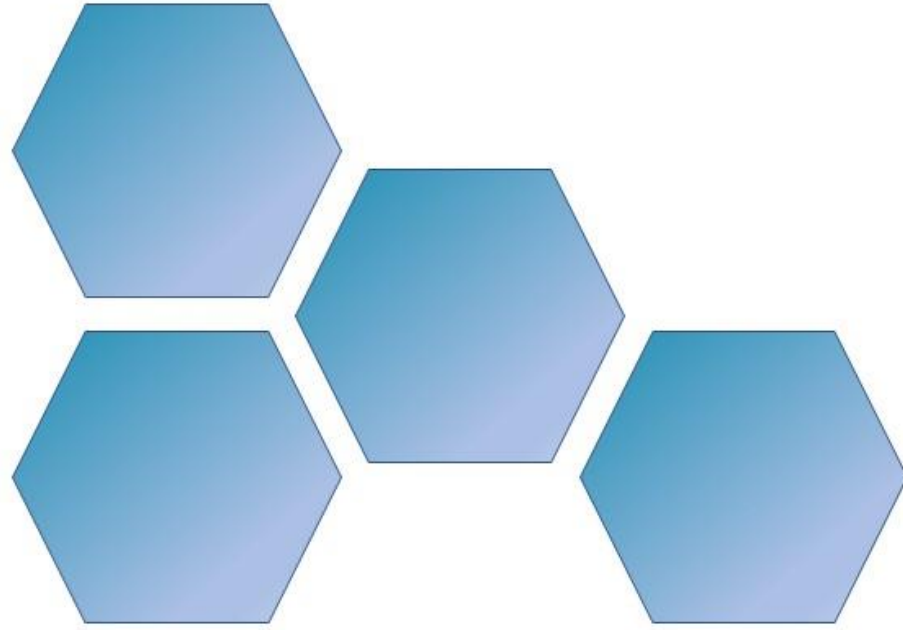
Andrea



James



School and College
Students



SEHCSNetwork
Connecting Healthcare Sciences

What is on the network?



School and College Zone



University and HEI Zone



Routes into the Professions



Research Hub



- The network is structured in discrete zones
- There is a general zone, a zone for each of the 4 HCS specialisms, and there will be a zone for each ICS in the South East
- You can create groups of members and send targeted information, e.g. Research Hub members, School Teachers, etc
- You can restrict access to parts of the network to groups if needed
- Members can subscribe to push-notifications in areas that interest them

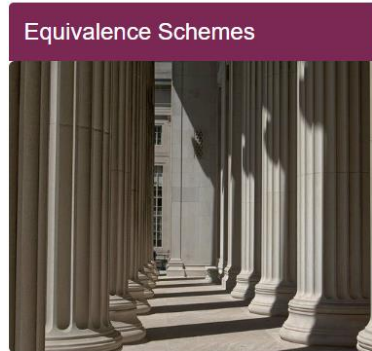
For example: Routes into the Professions



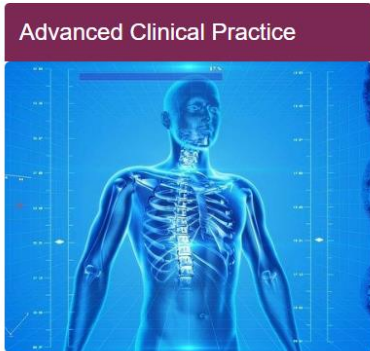
Workforce development, education and training

Create a new item   

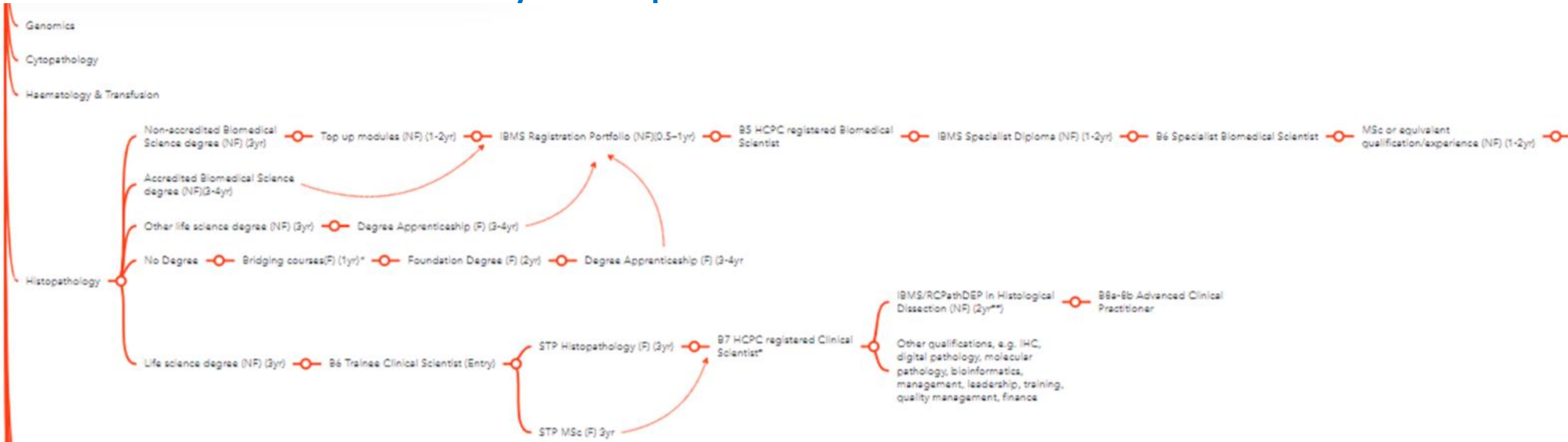
This folder contains information relating to workforce development, education and training in Healthcare Science.



Details of education and training schemes, useful links, etc are accessed by clicking the buttons



Coming soon: Education, Training and Career Pathway maps



- The maps can be used by employers to drive workforce development and recruitment strategy and by individuals to plan their own career progression
- Mapping of clear pathways, from initial training through to Consultant / Fellowship
- Integration of newer pathways, such as T-levels and apprenticeships alongside traditional education and training routes



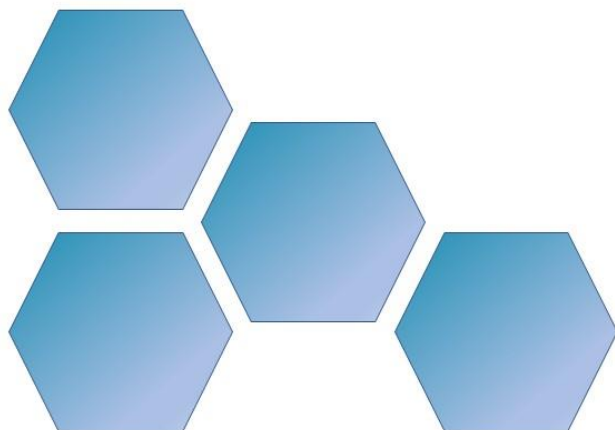
The more people and groups that join, the better...



Mutual benefit:

- Members and groups benefit as they can access all of the areas on the network, communicate with all of the members via the discussion forums, etc
- The network benefits from having more and more members, e.g.
 - An apprenticeship lead who posted a request for practice educator job descriptions received 5 in less than 24 hours
 - University Course Directors have found speakers for careers and engagement events using the online forum





SEHCSNetwork
Connecting Healthcare Sciences

- Currently 230 members
- Link with healthcare, education and government providers across the Integrated Care System
- Links to free resources
- Webinar and seminar programmes
- Careers information
- 150+ Continuing Professional Development resources
- Find a collaborator for your project or programme
- Convenient to engage with
- Inclusive and open to all
- Interactive
- Links to the Faculty of Healthcare Science
- Placement and career development opportunities

To join the South East Healthcare Science network, email:

sonali.soyas@nhs.net

Or scan the QR code below:



South East Healthcare Science Conference

We are excited to launch details for the inaugural South
East Healthcare Science Conference 2023!

'Science, Research, Innovation, Transformation'

7th June 2023

0900-1630

Ascot Racecourse, High St, Ascot SL5 7JX

Speakers include:

- Professor Dame Sue Hill (*Chief Scientific Officer (CSO) for England*)
- Professor Berne Ferry (*Head of School, NSHCS, HEE*)
- Professor Azzam Taktak (*Consultant Clinical Scientist*)
- Dr Jagjit Sethi (*Regional Chief Healthcare Scientist, EoE*)
- *And more to be confirmed..*

Book your free place [here](#)



If you have a query about the event, please contact: kathryn.tolfree@nhs.net

Do you have ideas, suggestions,
comments?



I'd love to hear from you!

Mark Knight

Chief Healthcare Scientist, NHS Kent and Medway ICB

markknight@nhs.net

07899 084 690

